

THE
ATKINSON



TECHNICAL INFORMATION

The Atkinson
Lord Street
Southport
PR8 1DB



+44 (0) 1704 533 333

www.theatkinson.co.uk



Venue Contacts

Emma Lloyd

Programming & Marketing Enquiries

Principal Manager - Programme & Marketing
emma.lloyd@sefton.gov.uk
+44 (0) 151 934 2129

Tracey Wells

Booking Enquiries

Programme Officer
tracey.wells@sefton.gov.uk
+44 (0) 151 934 2130

Simon Grainger

Technical Enquiries

Technical Manager
si.grainger@sefton.gov.uk
+44 (0) 151 934 2753

Last Updated - Feb 2018
E&OE

Table of Contents

Venue Contacts	2
Introduction	5
The Performance Spaces	5
Theatre	5
Studio	5
Performance Space Images	6
Theatre	6
Performance Space Specifications	7
Theatre - General Information	7
Theatre - Lighting Stock	8
Theatre - Sound Stock	8
Theatre - Stage Management & Communications	10
Theatre - Masking Stock	10
Theatre - Projection & Cinema Systems	11
Theatre - Fly Bar Layout	12
Theatre - Ground Plan	13
Studio - General Information	14
Studio - Lighting Stock	15
Studio - Sound Stock	16
Studio - Stage Management & Communications	17
Studio - Masking Stock	17
Floating - Sound Stock	19
Floating - Rostra	20
Other Production Requirements	21

Public Liability Insurance	21
Children's Performance Licensing	21
Animal Performance License	21
Risk Assessments & CDM Regulations 2015	21
Smoking On Stage	22
Theatrical Smoke, Haze & Pyrotechnic Effects	22
Rosin & Tap Shoes	22
Scenery & Set	22
Backstage Accommodation	23
Dressing Rooms	23
Accessibility	23
Green Room	23
Laundry Facilities	23
How To Find Us	24
By Road	24
By Train	24
Local Hire Companies	25

Introduction

The Atkinson is Sefton Council's flagship arts and cultural venue. As a key transformational project to enhancing Southport's offer of 'England's Classic Resort', the £17 million development involves the integration of four Arts & Cultural managed venues, Southport Arts Centre the Atkinson Art Gallery, Botanic Gardens Museum and the Southport Library, into one regional cultural centre.

Set in a Grade II listed building in the centre of Lord Street, The Atkinson acts as a focal point for the town centre and will add to the food and beverage offer and the Lord Street retail offer to make a complete cultural visitor experience for the town.

Sefton Council, North West Development Agency and Sea Change funded the Atkinson's redevelopment project and Sefton Council continue to manage and fund the venue for its residents and visitors. A funding application has also been successful to the Heritage Lottery Fund for the fit out of the new museum areas to feature within the Centre from June 2014.

The Atkinson delivers high quality arts and cultural entertainment from dance and drama to fine art and music, whilst supporting community art groups with their development and performances.

The Performance Spaces

Theatre

The stage is a traditional proscenium arch design. Full stage depth is 10m. The stage wall to wall measurement is 13m. The proscenium arch height is 7m with an overall opening width of 10m. The stage is 585mm above the auditorium floor level.

Studio

This is an open stage venue, although with provision for a soft proscenium as and when required. Full stage depth is 5m. The stage wall to wall measurement is 14.6m. The soft proscenium arch height is 5m with an overall opening width of around 9m. The stage is 625mm above the auditorium floor level.

Performance Space Images



Theatre



Studio

Performance Space Specifications

Performance Space Specifications are subject to change, please contact the venue prior to your visit to confirm current specs.

Theatre - General Information

- The Theatre Stage is covered with Harlequin Vinyl Dance Floor. As such we do not allow any set to be fixed directly into the floor. All set must be free-standing and where necessary weighted with stage weights (we have a limited number in stock). Floor cloths and cables must be taped with LeMark Matt ProGaff (black)
- The grid is split height due to the architecture of the building
 - Lower Grid Height (Bars 1 & 2) - 8.2m
 - Upper Grid Height (Bars 3 and Above) - 9.4m
- Bars 2, 4, 7, 10, 14, 17, 20 & 24 are flown on a powered winch system. These are reserved for Lighting & Masking Purposes (UDL 500Kgs)
- All other bars are 4-Line Hemp and are available for additional masking & set requirements (UDL 120 Kgs). **Please note that due to the low grid height and the height of the proscenium opening, live flying during a performance is not possible.**
- The Grid is of cable-net construction so has limited dead-hanging points. If you intend to dead hang set please get in contact with us to discuss your requirements prior to arrival.
- Get in is via lift through the Scene Dock located on the Ground Floor of the building. Access to the scene dock is via the Lord Street entrance. Lift Dimensions
 - Length - 2.8m
 - Width - 1.8m
 - Height - 5.3m
 - Get In Door Height - 3m
 - Get In Door Width - 1.1m
- Please note that no one can ride in the lift at any time, all equipment must stand of its own free will and must not need support.
- FOH Lighting is positioned across 2 bridges (2 rows of 3) in the theatre roof space. All fixtures are fully accessible for rigging and focusing.
- We do not allow ladders in any part of the building. Access is gained via Genie GS-1932 Scissor Lift. Access routes must be maintained around the set for lighting focusing.
- The back wall of the theatre stage is painted white and can be used as a cyclorama. 4 Cell Flood Battens can be rigged to act as a RGBA colour wash.
- 16, 32, 64 & 125a 3 Phase Power is available USL. 16a & 32a single phase power is available at various locations around the stage.

Theatre - Lighting Stock

Control & Dimming	
Qty	Fixture
1	ETC Ion 1024 Channel Lighting Desk with 10 x 20 Fader wing & Dual Touch Screens
3	DMX Buffer
153	ETC Sensor+ 3Kw Dimming Channels
33	ETC Sensor+ 3Kw Non-Dimming Channels
33	Local Switched 16a Hot Power

Dimmers can be controlled via DMX or SACN Networking

Lighting Fixtures		
Qty	Fixture	Wattage
36	ETC Source 4 15-32 Degree Zoom Profile	750w
18	ETC Source 4 25 - 50 Degree Zoom Profile	750w
4	ETC Source 4 26 Degree Fixed Angle Profile	750w
25	ETC Source 4 Par (With Changeable Lens Kit By Request)	750w
10	Par 64 (CP60 / CP61 / CP62 Lamps Available By Request)	1000w
24	Selecon Rama Fresnel	1200w
16	Selecon Rama PC	1200w
6	Selecon Arena Fresnel	2000w
2	Robert Juliat Topaze Compact Follow Spot	1200w MSD

All Fixtures come with colour frames, standard hook clamps and safety bonds. Floor Stands & Booms available on request.

Miscellaneous	
Qty	Fixture
20	Rainbow Colour 8" Pro 2 Scroller to fit S4 Zoom
6	Iris for ETC Source 4 Zoom
12	Gobo Holder for ETC Source 4 Zoom - B Size

We stock various Lee & Rosco gel. Please contact us in advance of your arrival to confirm colour call requirements.

Various generic gobos are also in stock.

Theatre - Sound Stock

Mixing & Playback	
Qty	Equipment
1	Yamaha M7CL 48 Channel Digital Mixing Desk (Headphones available on Request)
1	Yamaha MY16-AT ADAT I/O Card
1	MacMini with Figure 53 Q-Lab Pro Audio
1	Denon CD Player

Sound Reinforcement & DSP		
Qty	Equipment	Notes
2	EM Acoustics MSE-156	Pros L & R
2	EM Acoustics MSE-156	Delay L & R
4	EM Acoustics EMS-118	Sub L & R
3	EM Acoustics i2	Front Fill
2	EM Acoustics EMS-51	Gallery Fills
1	Yamaha DME-24N Digital Signal Processor	

Signal Processor is programmed with Stereo L/R Feed (Bus B CHNL 7 & 8).

Please note that due to the construction of the auditorium we are unable to accommodate company provided multicores between FOH control and stage.

24 stage send are provided between FOH control position and stage via three VDM multicore points located DSL behind the SM Desk.

Six returns are provided for monitor mixes (via Rack Room) with a further eight more to stage if needed.

2 x Cat 6 cable runs are provided between FOH control and down stage right wing.

Radio Mic System	
Qty	Equipment
8	Sennheiser EW 100 G3 Receivers (Channel 38 License)
2	Sennheiser ASA RF distribution with Omni-directional paddles
4	Sennheiser EW100 G3 / EW135 G3 GB Handheld Radio Mics
4	Sennheiser EW100 G3 / EW112 G3 GB Lavalier Radio Mics with Tie Clips
4	Sennheiser ME-3N for Beltpacks

Companies are welcome to bring their own radio mic stock, but must provide copies of licences prior to fit up

Theatre - Stage Management & Communications

- 1 x GDS Custom Built Stage Management Desk is located in the DSL corner, with the following modules;
 - 2 Ring Communication Circuit (A & B) - Channel A linked into radio comms
 - 12 Channel Q-Light Master Station
 - Show Relay Speaker with Local & Global Mute Control
 - Dual Video monitors linked to Standard and IR camera System
 - Venue Clock
 - Show Timer
- Comms & Patchable Q-Light points are strategically placed around the venue. Single & Dual Channel comms headsets are available on request.
- Stage management position also encompasses Safety Curtain Control, House Tab Control, Drencher Control, Cinema Screen Control, House Light Control & Working Light Control.

Theatre - Masking Stock

Qty	Cloth	Dimensions
2	House Tabs - Red	5500 x 7700
4	X-Stage Curtains - ½ Tabs & Full Black	5500 x 7500
1	Straight Border - House Border	10000 x 2500
4	Strainht Border	11000 x 2500
8	Legs	1500 x 6500
8	Legs - Lateral Masking	3000 x 5300
1	Cyclorama	10000 x 8000

- Lateral masking is provided SL & SR by means of 4 x Lateral Masking Legs on walk along tracks mounted under the fly and op-fly floors.
- Red House tabs on a fixed speed motorised track are rigged just upstage of the setting line permanently.
- 1 x House Border & 2 x Legs are permanently rigged on Hemp 1 to act as house masking. These can not be moved.
- 2 x X-Stage curtains are permanently rigged on a hand line track upstage of winch bar 5. These act as a mid stage full black and can not be moved. When open they act as mid stage legs.
- 2 x X-Stage curtains are permanently rigged on a hand line track upstage of winch bar 8. This acts as a full black and can not be moved. When open it acts as an US pair of Legs.
- All other masking is not fixed and may be moved by prior arrangement.

Theatre - Projection & Cinema Systems

Please note that the Cinema Projection system is only available for Cinema based events and is not suitable for use in theatre productions due to the proximity of the screen to the stage edge (less than 1m).

Qty	Equipment
1	DP2K-15C Digital Cinema Projector with 3Kw Xenon Lamp and fixed focus lens.
1	Dolby DSS-220 Digital Cinema Server (With IMB in Barco Projector)
1	DataSAT AP-20 Digital Cinema Surround Sound Processor
1	Wyrestorm Scaler (patch for VGA, S-VIDEO, Composite, Component, HDMI & DVI)
1	Sony S790 BluRay Player

Video Formats & Quality

HIGHEST QUALITY - 2K DCP (Digital Cinema Package) file loaded onto Dolby DSS-220

- **Must be DCI compliant** (<http://www.dcinovies.com>)
- Either Flat (1998 x 1080 – Aspect Ratio 1.85) or Cinemascope (2048 x 858 – Aspect Ratio 2.39)
- JPEG 2000 Compression
- 24 Frames Per Second
- Up to 7.1 Cinema Surround Sound (also accept 5.1)
- Named using naming conventions (<http://digitalcinemanamingconvention.com>)
- Delivered on eSATA HDD (or USB – but will take longer to transfer onto Dolby DSS220)

MEDIUM QUALITY – BluRay & DVD

- Standard BluRay player operating over HDMI thru 1080p Video Switch
- 5.1 Audio Maximum

OTHER MEDIA & INPUTS

- Laptops via VGA & HDMI through Video Switcher
- 2.1 Audio maximum

7.1 Cinema Surround Sound

Qty	Equipment
6	QSC SR-1020 Surround Loudspeaker
2	QSC SR-1030 Surround Loudspeaker
1	QSC CX-404 Power Amplifier

Speakers Arranged;

- 4 x SR-1020 Surround Left
- 4 x SR-1020 Surround Right
- 1 x SR-1030 Rear Left
- 1 x SR-1030 Surround Right

When operating in 5.1 rear speakers take feed from surround channels.

Theatre - Fly Bar Layout

Bar #	Type	UDL Kgs	Setting Line	Bar Length	Notes
1	H	120	+500	10500	House Border & Legs
2	W	500	+800	10000	LX 1
3	H	120	+3000	10500	
4	W	500	+3250	10000	LX 2
5	H	120	+3700	10500	
6	H	120	+3900	10500	
7	W	500	+4200	10000	LX 3
8	H	120	+4550	10500	
9	H	120	+4800	10500	
10	W	500	+5100	10000	LX 4
11	H	120	+5600	10500	
12	H	120	+6600	10500	
13	H	120	+6750	10500	
14	H	500	+7000	10000	
15	H	120	+7400	10500	
16	H	120	+7600	10500	
17	W	500	+7900	10000	LX 5
18	F	n/a	+8300	10500	Half Tabs
19	H	120	+8400	10500	
20	W	500	+8900	10000	LX 6
21	H	120	+9300	10500	
22	H	120	+9500	10500	
23	H	120	+9700	10500	
24	W	500	+10000	10000	LX 7
25	H	120	+10400	10500	Full Black

- We require at least 2 members of crew on the fly floor at any time when hemp bars are moving.
- Winched bars are operated by venue technicians with specific training. If a member of show crew is required to operate winched bars please contact us in advance and we can arrange training on the day of your visit.
- We do not recommend full height cloth flying DS of bar 15 due to grid height & sight lines, we also recommend bringing cloth clips.

LOAD
IN
LIFT

SAFETY CURTAIN

25	H
24	W
23	H
22	H
21	H
20	W
19	H
18	H
17	W
16	H
15	H
14	W
13	H
12	H
11	H
10	W
9	H
8	H
7	W
6	H
5	H
4	W
3	H
2	W
1	H

NTS
DO NOT SCALE FROM THIS DRAWING

 Cafe & Theatre Event Management
© The Atkinson
Leeds Street, Southside
PS9 1QB

The Atkinson - Theatre

1:25 @ A0 NOV 2013
ATK/TH/MGP/1 SJH



Studio - General Information

- The Studio Stage is covered with Harlequin Vinyl Dance Floor. As such we do not allow any set to be fixed directly into the floor. All set must be free-standing and where necessary weighted with stage weights (we have a limited number in stock). Floor cloths and cables must be taped with LeMark Matt ProGaff (black)
- The studio benefits from a fixed truss grid, accessed by Genie Lift. This allows for on stage lighting positions and masking.
- FOH lighting is via a series of catwalks and gantries, lights can be double stacked on the catwalks due to 2 sets of rails.
- Get in is via lift straight from Sharrock Street at the back of the building.
 - Length - 2.8m
 - Width - 1.1m
 - Height - 4m
- Please note there is a tight corner to manoeuvre once out of the lift on stage level.
- The studio is permanently rigged with a black wrap around covering the entire stage space.
- Seating can be arranged in several configurations;
 - Bleacher Seating
 - Cabaret Style
 - Standing
- If the bleacher is away there is no in auditorium access between the control positions FOH and the stage.
- The Studio Bar is to Auditorium Left. Prior to performances and during the interval the bar may be open at the duty managers discretion. Once the performance has begun the bar will stop serving, however the acoustic wall will remain open.
- The auditorium can be accessed via 2 sets of treads which are placed extreme SL & SR. If you do not require these please let us know in advance and they will be removed.
- L/R cabs are ground stacked on stage, please take this into account when planning shows.
- 32a Single phase is available USR & USL.
- 32a 3Phase is available on the SR lighting Gantry.

Studio - Lighting Stock

Control & Dimming	
Qty	Fixture
1	ETC Ion 1024 Channel Lighting Desk with 10 x 20 Fader wing & Dual Touch Screens
2	DMX Buffer
72	Zero 88 Chilli Dimmer Channels
24	Zero 88 Chilli Non Dimming Channels

Dimmers can be controlled via DMX

Lighting Fixtures		
Qty	Fixture	Wattage
12	ETC Source 4 15-32 Degree Zoom Profile	750w
6	ETC Source 4 25 - 50 Degree Zoom Profile	750w
20	ETC Source 4 Par (With Changeable Lens Kit By Request)	750w
16	Selecon Rama Fresnel	1200w
20	Selecon Rama PC	1200w
1	Selecon Pacific Follow Spot	1000w

All Fixtures come with colour frames, standard hook clamps and safety bonds. Floor Stands & Booms available on request.

Miscellaneous	
Qty	Fixture
14	Rainbow Colour 8" Pro 2 Scroller to fit S4 Zoom / Selecon Rama
6	Iris for ETC Source 4 Zoom
12	Gobo Holder for ETC Source 4 Zoom - B Size

We stock various Lee & Rosco gel. Please contact us in advance of your arrival to confirm colour call requirements.

Various generic gobos are also in stock.

Studio - Sound Stock

Mixing & Playback	
Qty	Equipment
1	Yamaha LS9 32 Digital Mixing Console (Headphones available on Request)
1	Yamaha MY16-AT ADAT I/O Card
1	Tascam MiniDisk Player
2	Denon CD Player

Sound Reinforcement & DSP		
Qty	Equipment	Notes
4	Martin Blackline H3	Stage L & R
2	EM Acoustics MSE-121X	Stalls Fill L & R
2	EM Acoustics EMS-156	Circle L & R
1	Yamaha DME-24N Digital Signal Processor	
Signal Processor is programmed with Stereo L/R Feed (Bus Y CHNL 7 & 8) Matrixed and delayed to the system.		
24 x Tie Lines from stage are provided down 3 x VDM multicore points located in various points around the stage.		
6 x Returns are provided to monitor mixes (via Rack Room). There are no return lines to stage.		
Company provided multicores must be at least 60M as the cable run is via the roof space.		

Radio Mic System	
Qty	Equipment
2	Sennheiser EW 100 G3 Receivers (Channel 38 License)
1	Sennheiser ASA RF distribution with Omni-directional paddles
2	Sennheiser EW100 G3 / EW135 G3 GB Handheld Radio Mics
Companies are welcome to bring their own radio mic stock, but must provide copies of licences prior to fit up	

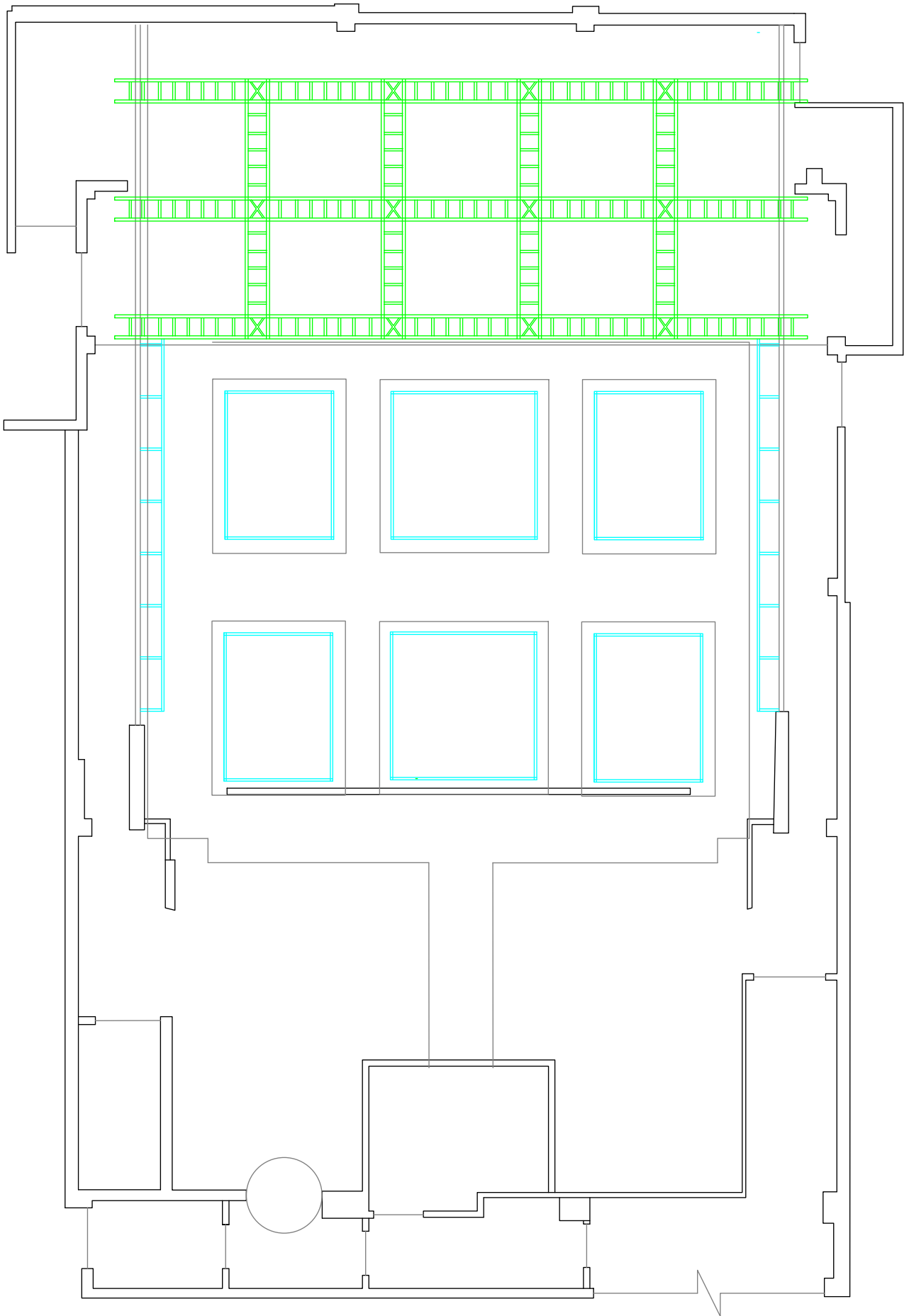
Studio - Stage Management & Communications

- 1 x GDS Custom Built Stage Management is located in the USR corner, with the following modules;
 - 2 Ring Communication Circuit (C & D) - Channel C linked into radio comms
 - 12 Channel Q-Light Master Station
 - Show Relay Global Mute Control
 - Dual Video monitors linked to Standard and IR camera System
 - Venue Clock
 - Show Timer
- Comms & Patchable Q-Light points are strategically placed around the venue. Single & Dual Channel comms headsets are available on request.
- Stage management position also encompasses House Tab Control, Cinema Screen Control, House Light Control & Working Light Control.

Studio - Masking Stock

Qty	Cloth	Dimensions
2	X - Stage Curtains	7000 x 5300
2	Legs	2000 x 5300
8	Legs - Wrap Around	3000 x 5300
1	Border - Truss Front	13300 x 600

- Wrap around masking is provided SL & SR by means of 8 x Lateral Masking Legs on walk along tracks mounted under the truss
- Black tabs on a variable speed motorised track are rigged just upstage of the setting line permanently.
- 1 x House Border & 2 x Legs are permanently rigged from the truss and can not be moved.



NTS
DO NOT SCALE FROM THIS DRAWING

	Curis & Taylor Event Management 100 The Atkinson Southport L35 5EF
The Atkinson - Studio	
Studio Ground Plan	
1:75 @ A3 25/04/2014	
ATK/GPL/ST/1	SJH

Floating - Sound Stock

Floating stock can be allocated to either venue. Please contact us in advance to arrange stock bookings. Please note Technical Specifications and Stage Plans for bands will be automatically allocated stock.

Microphone Stands	
Qty	Equipment
16	K & M Small Mic Stands
18	K & M Tall Mic Stands
2	K & M Table Top Mic Stands

Microphones & DI's	
Qty	Equipment
9	Shure SM57
10	Shure SM58
5	Shure PG81
1	Shure DMK57-52 Drum mic kit
11	BSS Active DI Box
4	Choir Microphone - Suspended
1	Sure Beta 52A
2	Rode M3
4	AKG C1000

Inputs & Cabling	
Qty	Equipment
6	VDM 8 Way Stage Box (M & F XLR)
<p>The Atkinson carries enough cable to run all in house stock including a limited stock of XLR. Please note we do not stock Jack cables as standard so these must be provided if being used for instruments.</p>	

Monitors	
Qty	Equipment
11	EM Acoustics M12
3	Martin Audio LE 400

Floating - Rostra

The Atkinson has 24 sections of fixed height Sico Deck rostra on site. Available sizes are:-

12" height	-	8 sections of 8ft by 3ft
18" height	-	8 sections of 8ft by 3ft
24" height	-	8 sections of 8ft by 3ft

The Atkinson also has a number of handrails and steps available for use. Please note that we do not stock any skirt for the stage decks.

Other Production Requirements

Public Liability Insurance

All productions are required to have public liability insurance which must be submitted with a copy of the public liability declaration form before productions can take place.

Children's Performance Licensing

Under the Children (Performances) Regulations 1968 any children in performance at The Atkinson must be covered by a license or body of persons exemption for both rehearsals and performances. A copy of the License must be submitted to The Atkinson upon arrival. Any young person without a license will not be allowed access to the backstage and stage areas.

Any person who fails to observe any condition to which a licence is granted or knowingly or recklessly makes any false statement in or in connection with an application for a licence is liable to a fine not exceeding level 3 on the standard scale (currently £1000) or imprisonment for a term not exceeding three months or both (section 40 of the Children and Young Persons Act 1963)

Animal Performance License

The visiting Hirer must supply a copy of the performance licence for any animal taking part in their event. A copy of the agreed licence must be given to The Atkinson before the event takes place. For further information visit Performing Animals Licence.

Risk Assessments & CDM Regulations 2015

Risk assessments must be produced for any and all activities that form part of the production (for example use of raised platforms).

The Atkinson holds risk assessments and safe operating procedures for day to day tasks undertaken by the crew (for example lighting rigging).

Where set is to be constructed (including rigged and struck during a performance), the incoming company is responsible for producing the appropriate Construction Phase Plans, Risk Assessments and Method Statements. Please submit your CPP and RAMS documentation to the Atkinson Technical Department at least four weeks prior to the performance date. For further information on Construction Design & Management Regulations (2015) and how it applies to the entertainments industry, please follow the link below.

HSE CDM Website <http://www.hse.gov.uk/entertainment/cdm-2015/introduction.htm>

Smoking On Stage

The Atkinson permits smoking on stage, however a full risk assessment & smoking plot must be provided upon arrival. A smoking plot should contain the following;

- Actor To Be Smoking
- Q-Page and Line for lighting cigarette
- Method of lighting cigarette
- Blocking whilst cigarette is lit
- Q-Page and Line for extinguishing cigarette
- Method of extinguishing cigarette (such as gel in ash-tray)

Theatrical Smoke, Haze & Pyrotechnic Effects

The Atkinson allows all of the above, however in the case of pyrotechnics please contact us in advance to discuss your requirements.

Please note that we do not allow Open Flame, Dry Ice & or Compressed Gas effects at any time. Low Fog is permitted in the form of standard smoke fluid run through a chiller unit (eg Jem Glaciator)

Rosin & Tap Shoes

The use of rosin, tap shoes or clogs is not allowed at any time on The Atkinson's stage floors due to the extensive damage this causes. Any performance on stage that requires the use of rosin, tap shoes or clogs will require incoming companies to provide Marley dance floor to protect the stage. If any damage occurs from dancing on the stage, the cost to repair will be charged back to the incoming company.

Scenery & Set

All incoming scenery and set must be treated with a flame retardant solution compliant with the following standards:-

BS476 parts 6 and 7, BS5867 part 2 1980, BS3119/3120, BS5852 and BS5665

Self built set that doesn't have fire safety certificates or other proof of flame retardant treatment will be subjected to a 10 second flame thrower test by The Atkinson technicians prior to entering the building. Any set or scenery that fails the test will not be allowed to enter the building.

Backstage Accommodation

Dressing Rooms

The Atkinson has 10 dressing rooms available over 3 floors. All dressing rooms are equipped with dressing tables, mirrors, mirror lights and sinks. Details of these can be found below;

Dressing Rooms			
Nr	Floor	Capacity	Notes
1	3	3	
2	3	5	
3	3	5	Reserved for Studio
4	2	8	
5	2	15	Ensemble
6	2	15	Ensemble
7	2	15	Ensemble
8	2	15	Ensemble
9	1	8	
10	1	8	

There are also male and female toilets on the First and Second Floors. The first floor toilets also have shower facilities for performers.

All dressing rooms have audio show relay & BOH announcement speakers. Corridors and toilets are also equipped with BOH announcement speakers.

Accessibility

The stage level is fully accessible to performers and crew with impaired mobility. Dressing room 3 is also fully accessible and has an accessible en-suite wet room.

Please note access to the stage from First & Second floor levels is via stairs only.

Green Room

The green room is located on the fourth floor and contains refreshment facilities and sofas.

Laundry Facilities

Washing and drying facilities are available in dressing room 10. Please see technical crew on the day for access.

How To Find Us

By Road

From the South, take the M6 to exit 26; the M58 will take you to Ormskirk and then take the A570 to Southport.

From the North, follow the A59 from Preston (exit 31 from the M6) and then follow the signs to Southport.

Theatre Load in is from Lord Street, Studio Load in is from Sharrock Street (Off Eastbank Street)

Parking

There is on-road pay and display parking around Southport as well as a number of off-road car parks.

For more detailed car parking information in Southport please visit sefton.gov.uk/parking

By Train

Northern Rail operates regular services to Southport from Manchester Airport, Manchester (Piccadilly, Oxford Road, and Victoria stations), Bolton and Wigan. Connecting services to / from the North East and Yorkshire are available at Manchester Piccadilly and from the North, Scotland and the South at Wigan.

Merseyrail run fast and frequent services between Liverpool South Parkway (for Liverpool John Lennon Airport), Liverpool City Centre and Southport.

For further rail enquiries please visit the National Rail website.

Local Hire Companies

Crystal Sound & Light

Unit 82, Woodside Business Park
Birkenhead
Merseyside
CH41 1EP
0151 345 9909

GS Pro Audio

Units 3 & 4, Wirral Business Centre
Dock Road, Wallasey
Merseyside
CH41 1JW
07886 834158

MSP Global

MSP House, Bridle Way
Bootle
Merseyside
L30 4UA
0344 811 0901

Adlib

Adlib House, Fleming Road
Liverpool
Merseyside
L24 9LS
0151 486 2214

Liverpool Scenic Workshops

Mayflower Avenue
Liverpool
L24 9BA
0151 486 5979