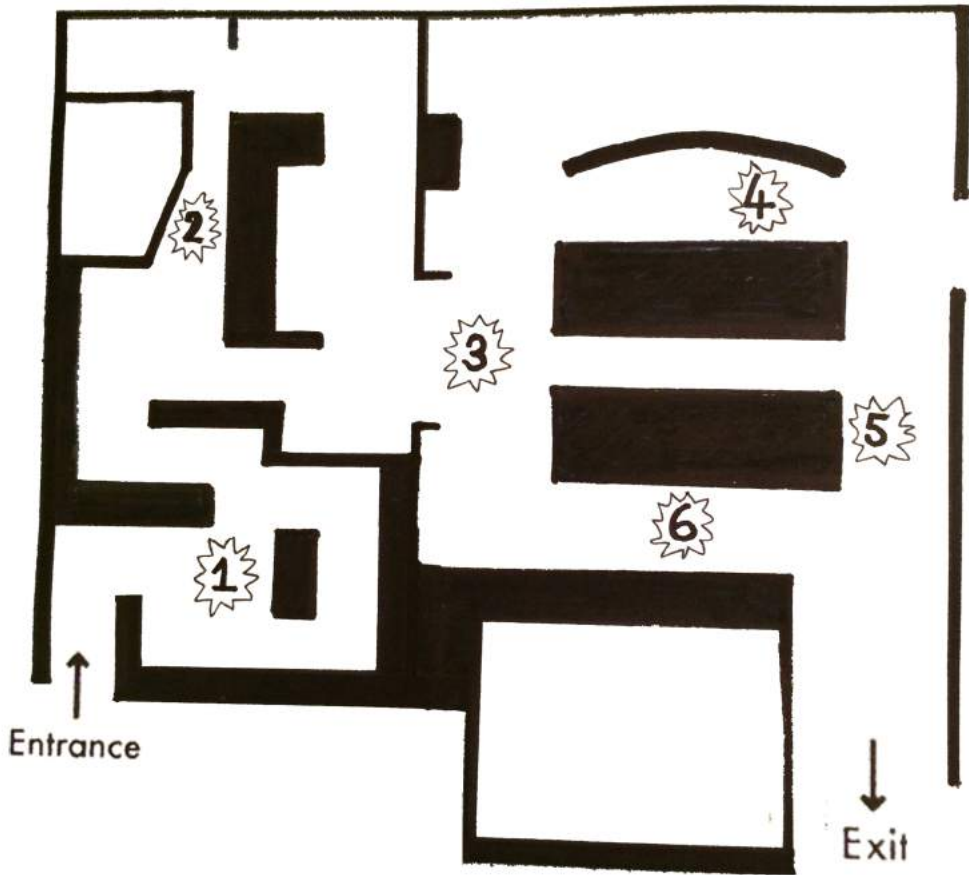


THE ATKINSON

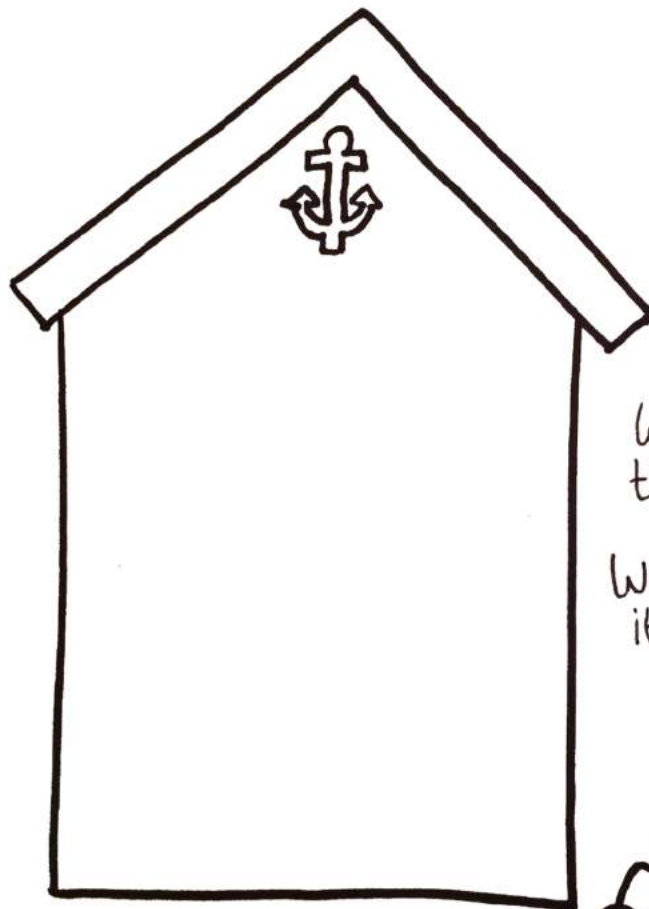
MUSEUM TRAIL



MAP OF ACTIVITIES

BETWEEN LAND & SEA

is a museum about a place called **SEFTON**. Use this trail to help you explore the galleries and learn more about this special coastline.



What is your favourite thing to do at the Seaside?
Write about it or draw it inside the beach hut.

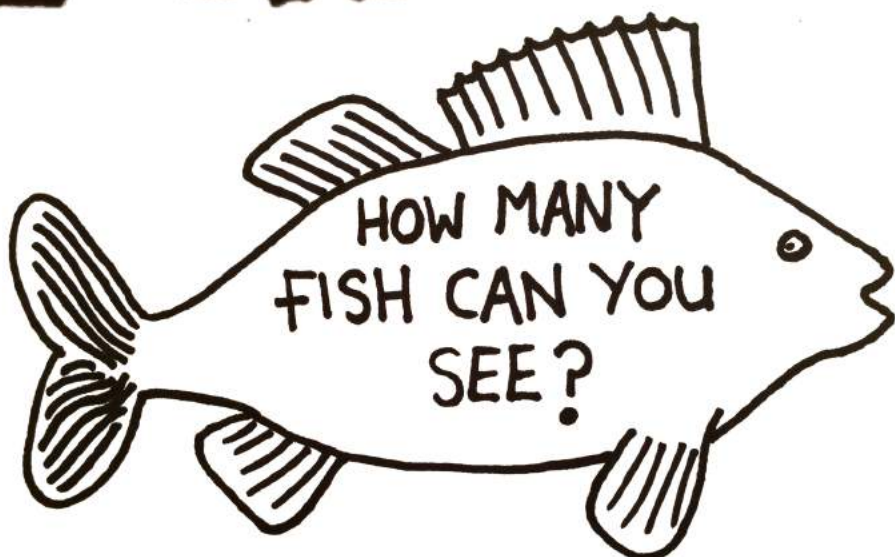


1 For a long time people have travelled to Sefton to have fun by the sea.
FIND the painting of a lady riding a donkey.
What colour is her dress?

Do you think she is rich or poor?

Why?

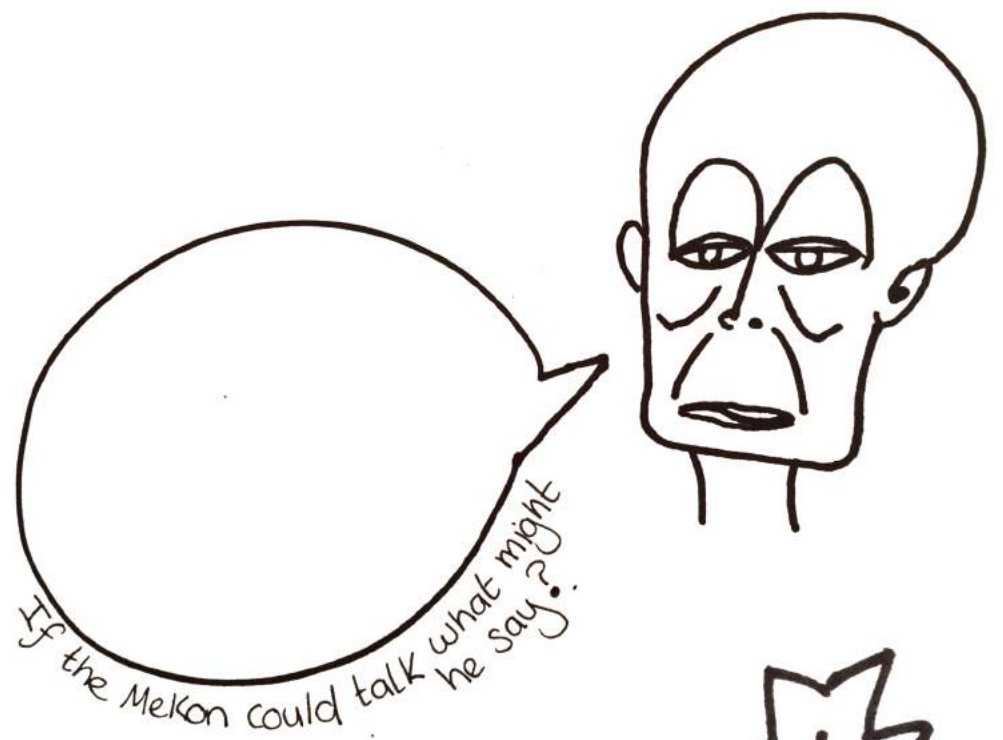
LOOK inside the Victorian Study.



3 Remember to look all around you.

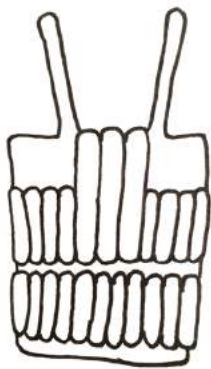
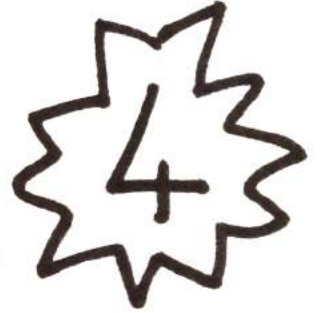
Have you spotted the green alien?

He is called the Mekon and he starred in a comic book written in Southport in the 1950s.



EXPLORE

the display about lifeboats...



What is the old life jacket made from?

How many model life boats can you see?

Imagine trying to row a lifeboat with those big, heavy oars



5 Frederick John Hooper went on an adventure to the Antarctic in **1910**.

Look at the objects and clothes he took with him.

If you were going on an adventure to the Antarctic tomorrow ~ what would you take with you?

THINGS TO PACK

6 Look at all the toys and comic strips that have been created in Sefton. When you get home have a go at **designing** your own toy or **creating** your own comic hero!