

The Sefton Open 2024

In collaboration with Southport Palette Club

Artwork hand in day: 12 March 2024, 11am - 7pm

Exhibition: 23 March - 4 May 2024

theatkinson.co.uk/exhibition/sefton-open-2024

The Sefton Open is an annual exhibition celebrating the creativity and artistic talent across the borough. The exhibition takes over The Atkinson's art gallery in an eclectic salon-style hang and features a wide variety of works from individual artists and local groups. Each year the exhibition attracts thousands of visitors to The Atkinson.

The Atkinson's longstanding partner, Southport Palette Club, select the work from individual artists for the Sefton Open. The club was formed in 1921 to champion the work of local artists and this will be their 98th annual exhibition.

A wide variety of media is welcomed, including film, sculpture, craft, paintings, prints and textiles. Artists may submit up to 3 original artworks for consideration by the Council of Southport Palette Club. There is a non-refundable £5 handling fee for each work submitted. No more than 4 works can be displayed by any individual artist in the Sefton Open, this includes works displayed with Southport Palette Club and works displayed with local groups.

Individual artists are responsible for selecting original artwork for consideration by Southport Palette Club or inclusion with local group submissions, which has not previously been exhibited at The Atkinson or featured in the shop. Local groups can register for entry by contacting jemma.tynan@sefton.gov.uk to receive the groups and societies entry form.

To submit artwork, you must be aged 18+ and either live, work or have been educated in Sefton.

Visitors to the exhibition can purchase catalogues and are encouraged to vote for their favourite artwork on display. The artwork with the most votes will be awarded The People's Prize. Visitors can also support local artists by investing in their work, most artworks are available to purchase through The Atkinson and the Own Art Scheme.

In the documents below you will find:

- Entry guidelines.
- Information on how to prepare your artwork for submission.
- Entry form.

Entry Guidelines

1. Artists may submit up to 3 original artworks for consideration by Southport Palette Club. No more than 4 works can be displayed by any individual artist in the Sefton Open: this includes works displayed through Southport Palette Club and works displayed through local groups.
2. If you would like to submit a large sculpture/artwork, especially if it is larger than a person, this should be checked with jemma.tynan@sefton.gov.uk / 0151 934 2033 before the hand in day.
3. Only new artwork will be accepted. The use of other people's work, that is copyright free, that has been used as inspiration must reference the original image and/or artist through the title. No 'like-for-like' copies of other works will be accepted.
4. Reproduction photographic prints of original artwork will not be accepted.
5. Artworks must be presented in a suitable frame; clip frames will not be accepted. Canvases do not require an additional frame if the mirror plates can be securely fixed to the back.
6. The Atkinson will subtract a commission of 25% from the sale price you provide. Southport Palette Club will subtract a commission of 5%. The total amount deducted from the artist will therefore be 30%. Please consider this when deciding your sale price. All sales must be made through The Atkinson.
7. The artist is responsible for packing their own works. No packing materials can be stored at The Atkinson.
8. It is the artist's sole responsibility to insure their work against any loss or damage.
9. For fairness, all artists have the same information provided in the exhibition catalogue for each artwork. We are unable to make any exceptions.
10. There is a non-refundable £5 handling fee for each work submitted, payable in cash only on submission with your completed entry form.
11. All artworks must be submitted ready for hanging with the required labels and mirror plates. Please refer to the diagram sheet included below and the 'how to' film on The Atkinson's website for full instructions: theatkinson.co.uk/exhibition/sefton-open-2024

Artwork hand in day:

Tuesday 12 March 2024, 11am – 7pm

Artworks can be submitted on this day only. Posted forms will not be accepted.

Collection of unselected work before exhibition:

Thursday 14 & Friday 15 March 2024, 11am – 4pm

Southport Palette Club will not provide any explanation for unselected work.

Collection of unsold work at end of exhibition:

Wednesday 8 May 2024, 12pm – 4pm

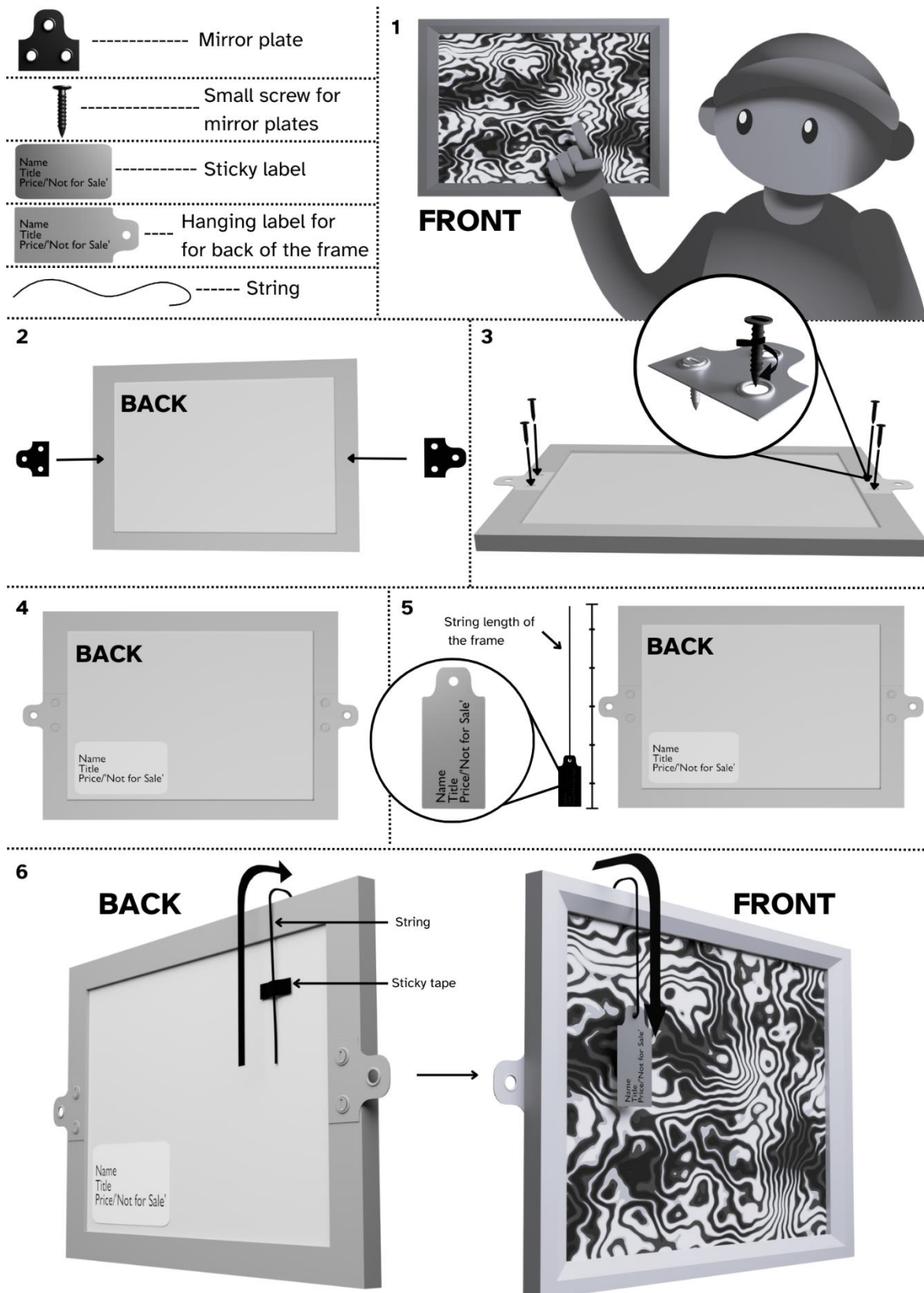
Thursday 9 & Friday 10 May 2024, 10am – 4pm

Please note:

Unless The Atkinson is advised of problems collecting works on the dates stated any work not collected will incur a storage fee of £5 per day. If the artist does not contact The Atkinson to arrange a new collection date any uncollected artwork will be disposed of after seven days.

How to prepare your artwork for submission

1. Position mirror plates halfway down either side of back of frame pointing outwards.
2. Attach with small screws shorter than depth of frame.
3. Attach sticky label at bottom of back of frame.
4. Thread string through hanging label.
5. Attach (sticky tape is fine) hanging label in position on back of frame. Make sure hanging label can flop over front of frame but does not hang below frame at back.



Individual Artist Entry Form

The Sefton Open 2024

In collaboration with Southport Palette Club

Artwork hand in day: 12 March 2024, 11am - 7pm

Exhibition: 23 March - 4 May 2024

Please complete the information below in block capitals. The completed form and £5 per artwork handing fee (cash) should be submitted to The Atkinson alongside your work on the hand in day.

Artist's name <i>for catalogue inclusion</i>			
Address			
Telephone number			
Email address			
	Artwork Title	Medium	Price
1.			
2.			
3.			
Terms & Conditions:			
<ul style="list-style-type: none"> • I agree to pay the £5 per artwork entry fee and a commission charge of 30% of the selling price of each piece sold. • I accept that all submissions will be included for the full duration of the exhibition, however, The Atkinson retains the right to remove any artwork from display without explanation. • I confirm that no copies of my artwork will be on sale elsewhere within The Atkinson during the time it is displayed in this exhibition and it has not been displayed with The Atkinson before The Sefton Open 2024. • Insurance is a matter for individual exhibitors. Southport Palette Club or The Atkinson will not accept responsibility for loss or damage to exhibits or entries, however it may be incurred. • I accept that as an exhibitor, by agreeing to take part in the event, I accept liability. • I confirm that all submissions are original artworks or clearly refer to any works or artists that have been used for inspiration and I understand that any works found to be in breach of copyright law will be removed immediately. • I understand that I can exhibit no more than 4 works across the whole of the Sefton Open, inclusive of the 3 original artworks for consideration by Southport Palette Club. 			
Please sign to show your acceptance of the terms & conditions:			